



Display Parameters:

- Measures & Displays the following parameters:
- Mains / DG Cumulative Energy
- Real Date & Time
- Instantaneous parameter voltage, current, power factor, frequency
- Mains / DG maximum demand
- Last billing cumulative energy for Mains / DG
- Last billing maximum demand in kW for mains / DG
- High resolution Energy
- Cumulative Tamper Count
- Last Tamper Occurrence with Date & Time
- Slave Address

Other Features:

- Sealable optical communication port for data downloading using CMRI
- Separate sealable RS485 communication port for networking AMR application and Prepaid application

Advantages:

- No overload of DG set by configuring load limit for DG
- Money & load based connection & disconnection
- Load/demand control



Technology of Measurement...

defined

Smart Prepaid Metering Solution with Dual Source

Single Phase & Three Phase



For Residential & Commercial Use

HPL offers Prepayment Solutions for Power Utilities with Automatic Meter Reading Solutions



HPL Electric & Power Ltd

Corp. Office: 76-B, Phase-IV, Sector-57, HSIIDC Industrial Estate, Kundli-131028, Sonipat, Haryana INDIA.
 Tel.: +91-130-350 3958, 350 3437
 Registered Office: 1/20, Asaf Ali Road, New Delhi-110 002, INDIA.
 E-mail: hpl@hplindia.com

Follow us:

Customer Care No.: 18004190198

E-mail: customercare@hplindia.com

For online Complaint Registration:

<https://www.hplindia.com/register-complaint.php>

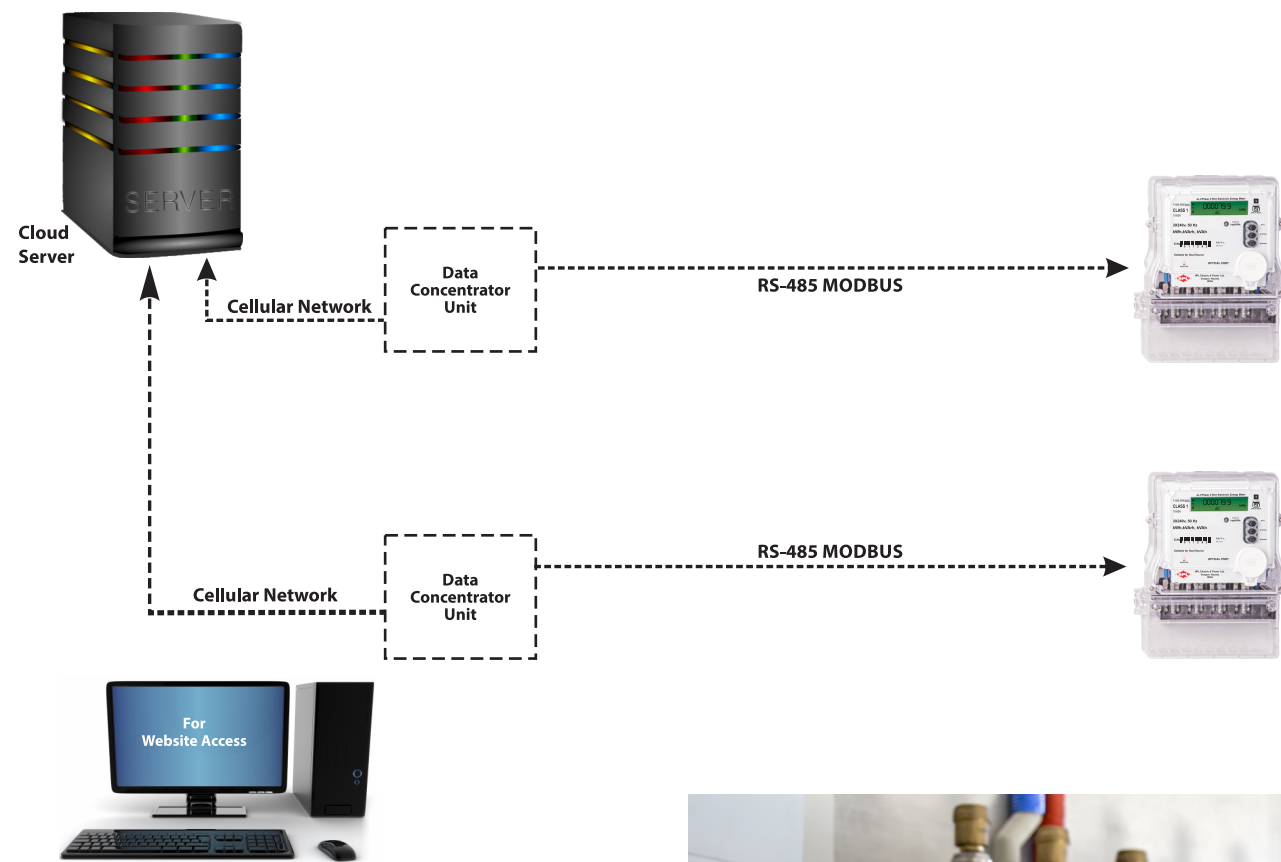
www.hplindia.com

• This document is not a contract • As part of our continuous improvement processes the specifications are subject to change without prior notice.





Smart Dual Source Prepaid Metering Solution



Features

- Accuracy complies as per requirement of IS13779 for class 1.0 meter and IS14697 for class 0.5 meter
- One-meter records Energy of two sources (Mains/DG)
- Communication protocol- DLMS over optical port & MODBUS over RS 485 port for BMS/prepaid application
- Mains / Generator selection through 240V signal
- Indication for current reversal tampering and phase availability on the LCD itself
- Meter can be configured for mains & DG load limit separately
- Load survey & Tamper logging available
- Rating available: 10-60A, -/5A
- Internal latching relay for connection/Disconnection

Technical Specification:

S.No	Description	Single phase	Three phase	CT Operated
1	Connection Type	Single Phase Two wire	Three Phase Four wire	Three Phase Four wire
2	IS Standard	IS 13779	IS 13779	IS 14697
3	Class	1.0	1.0	0.5s
4	Reference Voltage	240V	3x240V	3x240V
5	Current Rating	Direct connected 10-60A	Direct connected 10-60A	CT Operated -/5A
6	Starting Current	0.4%Ib	0.2%Ib	0.1%Ib
7	Display	Backlit LCD Display	Backlit LCD Display	Backlit LCD Display
8	Enclosure	Polycarbonate	Polycarbonate	Polycarbonate
9	Power Consumption	* Less than 1.5W & 8VA in Voltage circuit * Less than 1VA in Current circuit	* Less than 1.5W & 8VA in Voltage circuit *Less than 4VA in Current circuit per phase	* Less than 1.5W & 8VA in Voltage circuit *Less than 4VA in Current circuit per phase
10	Mains / Generator Selection	240V AC	240V AC	240V AC
11	Internal Relay	Available	Available	Not Applicable
12	Dimension	min. 149x179x93mm	min. 190x204x97mm	min. 188x195x96mm
13	Communication port	Optical & RS485	Optical & RS485	Optical & Rs485