



On Load By Pass Switches



Dimensional Details:

BY PASS SWITCH 125A-630A

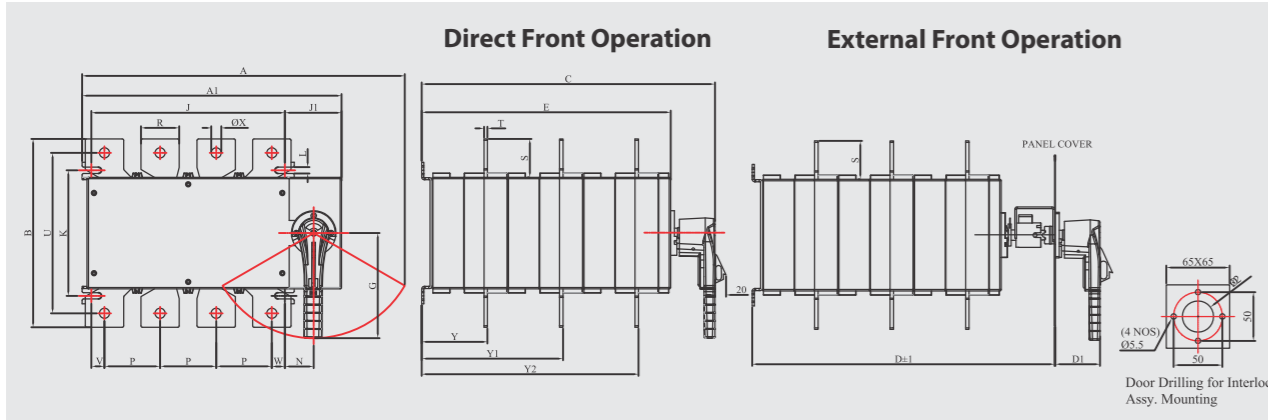


Table with columns: OVER ALL DIMENSION, FIXING OF SWITCH, CONNECTION TERMINAL, SW. WT. and rows for ratings 4x125A to 4x630A.

Note: All dimensions in mm (Tolerance ±5%)

BY PASS SWITCH 800A-1600A

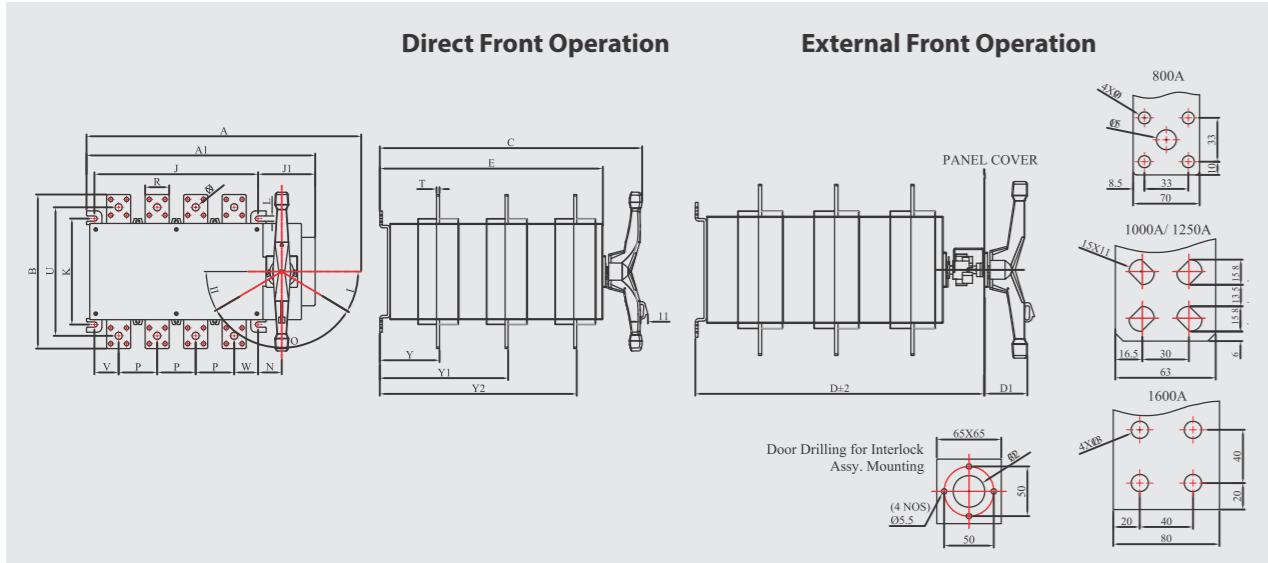


Table with columns: OVER ALL DIMENSION, FIXING OF SWITCH, CONNECTION TERMINAL, SW. WT. and rows for ratings 4x800A to 4x1600A.

Note: All dimensions in mm (Tolerance ±5%)



On Load By Pass Switches



Specification Electrical & Mechanical Characteristic

Specification table with columns: Frame Sizes, Current Rating, Thermal Current, Insulation voltage, Dielectric strength, Impulse voltage.

Rated Operational Current Ie (A) table with columns: Rating, Frame-1 to Frame-5.

Motor Power (KW) 415V table with columns: Rating, Frame-1 to Frame-5.

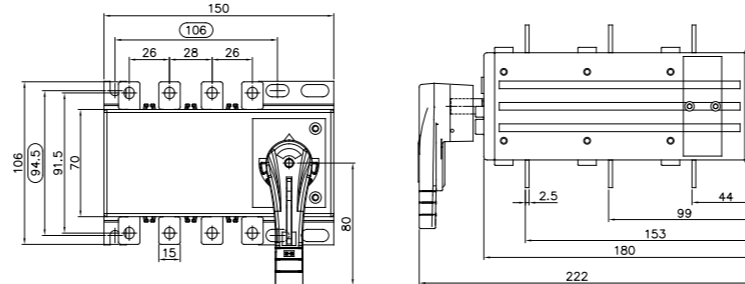
Overload Capacity table with columns: Rating, Frame-1 to Frame-5.

Making & Breaking Characteristics table with columns: Rating, Frame-1 to Frame-5.

Endurance table with columns: Rating, Frame-1 to Frame-5.

Connection table with columns: Rating, Frame-1 to Frame-5.

Dimensions for 63A-100A Switches



HPL/ONL/CS/09-24



HPL Electric & Power Ltd

Corp. Office: 76-B, Phase-IV, Sector-57, HSIIDC Industrial Estate, Kundli-131028, Sonapat, Haryana INDIA.

Follow us: [Social Media Icons]

Customer Care No.: 18004190198 E-mail: customercare@hplindia.com

On Load By Pass Switch For IT & Telecom Application



Salient Features

- Range : 125A to 1600A, 415V, AC-23A Conforms to IS/IEC:60947-3.
By Pass Switch is designed to specific need in IT industry and applications where UPS and Servo stabilizer provides main source of supply.
Presence of Arc chute plates enhances contact life.
Enhanced Mechanical & Electrical life.
Total safety : All moving and live parts covered.





On Load By Pass Switches

Function

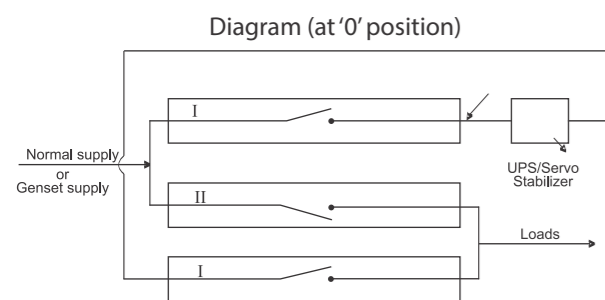
HPL cubicle ON LOAD BY PASS SWITCH connects normal supply to the loads in case stabilized source fails. It bypasses the UPS / Servo stabilizers in case of their failures and provides a means of connecting alternative supply to the load. By pass switch also ensures the isolation of up stream & down stream circuit in one operation at the UPS / Servo.

- Suitable for incoming and outgoing Power Distribution feeders.
- Available in Open execution, Steel sheet Enclosure & Direct Mounted.
- Unique Safety Handle with built in padlock facility

Operation

Selections of Position

- ▶ Loads are open circuited in Position 0.
- ▶ Loads are connected to the stabilized supply in Position I.
- ▶ Loads are connected to the normal supply in Position II.



Application

BY PASS SWITCH is designed to meet customers specific need in the IT companies, areas with inflammable environment like petrol pump pharmaceutical oxygen filling plants, critical load like hospitals, areas where LED application are more & stabilized voltage is required like showrooms & hotels where UPS & Servo Stabilizer provide main source of supply. In emergency normal supply can be made available to services without disturbing any installation and at the same time providing time for maintenance of UPS etc. without breakdown of services.

Approvals & Test

- Time tested
- Customer Accepted
- CPRI Tested
- ISO 9001 Certified



Globally Accepted
exporting to over
25 countries

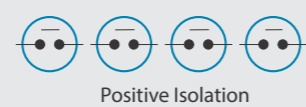
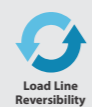


Highlights

- ▶ Conforms to IS/IEC:60947-3.
- ▶ Available in 6 frame sizes... rated current from 125A to 1600A in 4 Pole versions.
- ▶ Universal Terminals compatible for both Aluminum and Copper Bus or Thimble.
- ▶ Quick Make & Quick Break manual independent mechanism (spring loaded mechanism).
- ▶ Non bouncing type spring loaded contact.
- ▶ Arc chute plates to enhance contact life.
- ▶ High thermal & dynamic stress withstand capacity.
- ▶ Resistant to Tropical conditions, conductors, mold & enclosure designed considering safety.
- ▶ High Mechanical & Electrical life.
- ▶ 100% Neutral rating... true 4 pole switch.
- ▶ Clear indication of 'ON', 'OFF' and 'ON' Position (I - O - II).
- ▶ Line load reversibility.
- ▶ Vertical or lateral mounting.
- ▶ For Retrofit Spacer is available in packing.
- ▶ Total safety : All moving and live parts shrouded. Terminal shroud, source separator, phase barrier as standard feature.
- ▶ ROHS Compliant.
- ▶ Wide range of accessories.



- ▶ Terminal Shroud & Phase barrier as standard design product.
- ▶ Enclosed operating rod.
- ▶ 3 lock pad lockable handle in both ON & OFF positions.

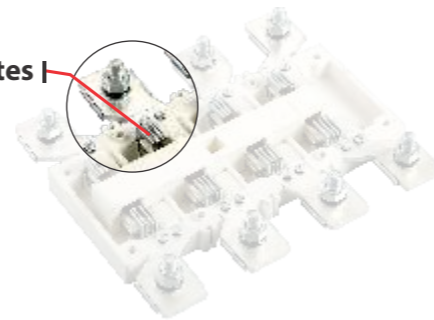


On Load By Pass Switches

Design with Total Safety

Stationary contacts for R, Y, B, N Phase are fixed to the moulded housing. 4 sets of moving contacts housed in a carrier are moved towards right for ON or left for OFF. The moving contacts slide on to the stationary contacts to make the circuit.

Arc Chute Plates



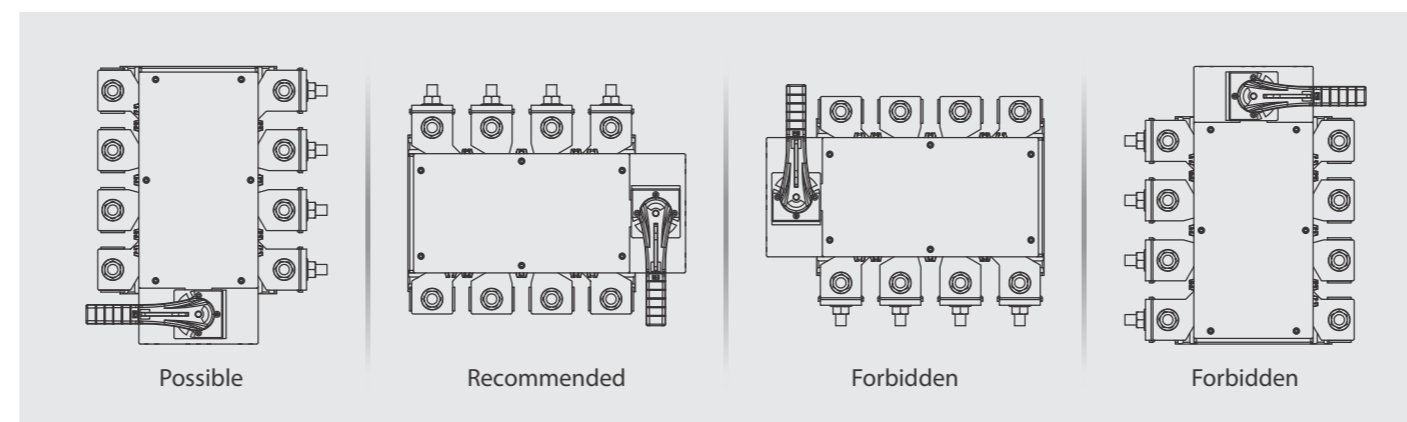
Arc Chamber

The Arc Chamber is specially designed and provided with arc chute plates with an arc channel as a flow guide to reduce the arcing time, thereby improving the capability of extinguishing the arc. This enhances the life of the moving & stationary contacts thereby increasing the life of the product.

Accessories

<p>Handle up to 320A</p> <p>Handle with padlock lever</p>	<p>Handle from 400A and above</p> <p>Double Sided Handle with padlock lever</p>	<p>Auxiliary Contact Kit</p>	<p>Bridging Bars</p>
<p>Extended Shaft</p>	<p>Door Inter Lock Assly.</p>	<p>Inter-Phase barriers 6 per set</p>	<p>Source Separator & Terminal Shroud 2 each per set</p>

Mounting Orientation



On Load By Pass Switches

By Pass Enclosure



General Characteristics

- ▶ Rated marked Black Handle Pad lockable in I - O - II position.
- ▶ CRCA Sheet (Door 1.2 mm & Body 1.6mm)... 125A to 800A
- ▶ CRCA Sheet (Door & Body both 2.0mm)... 1000A to 1600A.
- ▶ RAL 7035.
- ▶ 2 External earthing points on each side.
- ▶ Wall mounted with 4 bolts.
- ▶ Door locking system allows opening of door only in OFF position.
- ▶ Incoming & outgoing easily interchangeable at site.
- ▶ Coating of epoxy polyester powder 70 micron.
- ▶ Removable plate top & bottom.
- ▶ Door with solid hinges.

References and Dimensions

Rating	L (Length)	W (Width)	H (Height)	X	Y
125A to 200A	290	365	330	325	320
250A to 320A	350	455	356	415	380
400A to 630A	475	575	454	515	525
800A	550	680	568	620	600
1000A to 1600A	800	655	568	600	825

Note: All dimensions in mm (Tolerance ±5%)

